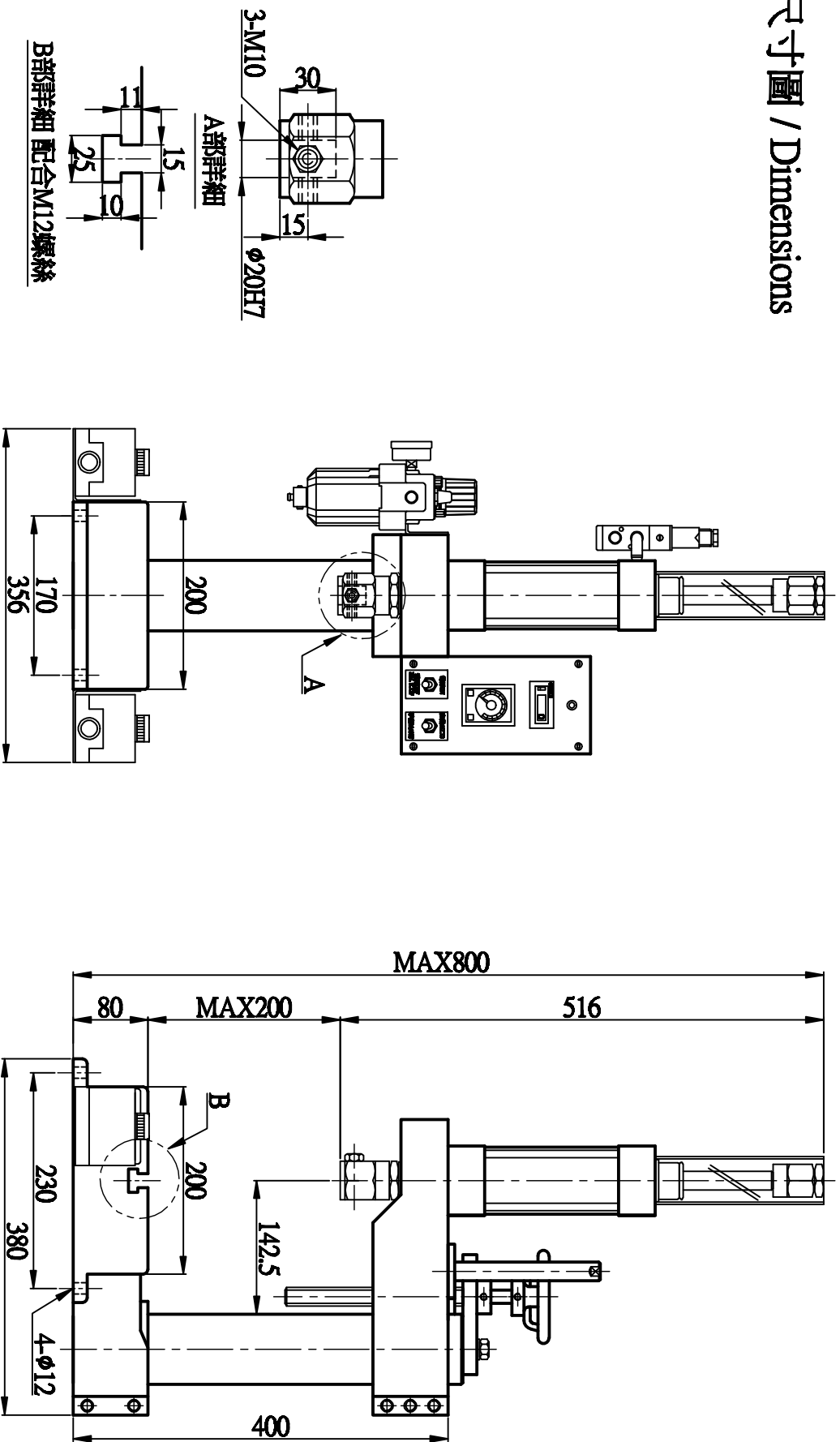


# 尺寸圖 / Dimensions



B部詳細 配合M12螺絲

## 性能規格 / Specification

Model	Item		CYLINDER DIA. (mm)	STROKE ADJ. (mm)	AIR CONSUMPTION (L)	PIPING BORE (PT)	OPEN HEIGHT (mm)	WEIGHT (kg)	備註欄
	*OUTPUT (kg)	STROKE (mm)							
F101-100-氣壓壓床	120	100	φ63	30	4	3/8"	200	39	

\*出力値之測定係在 5kgf/cm<sup>2</sup> 壓力表值條件下測得 / The output valve is measured at 5kgf/cm<sup>2</sup> shown on the pressure gauge.