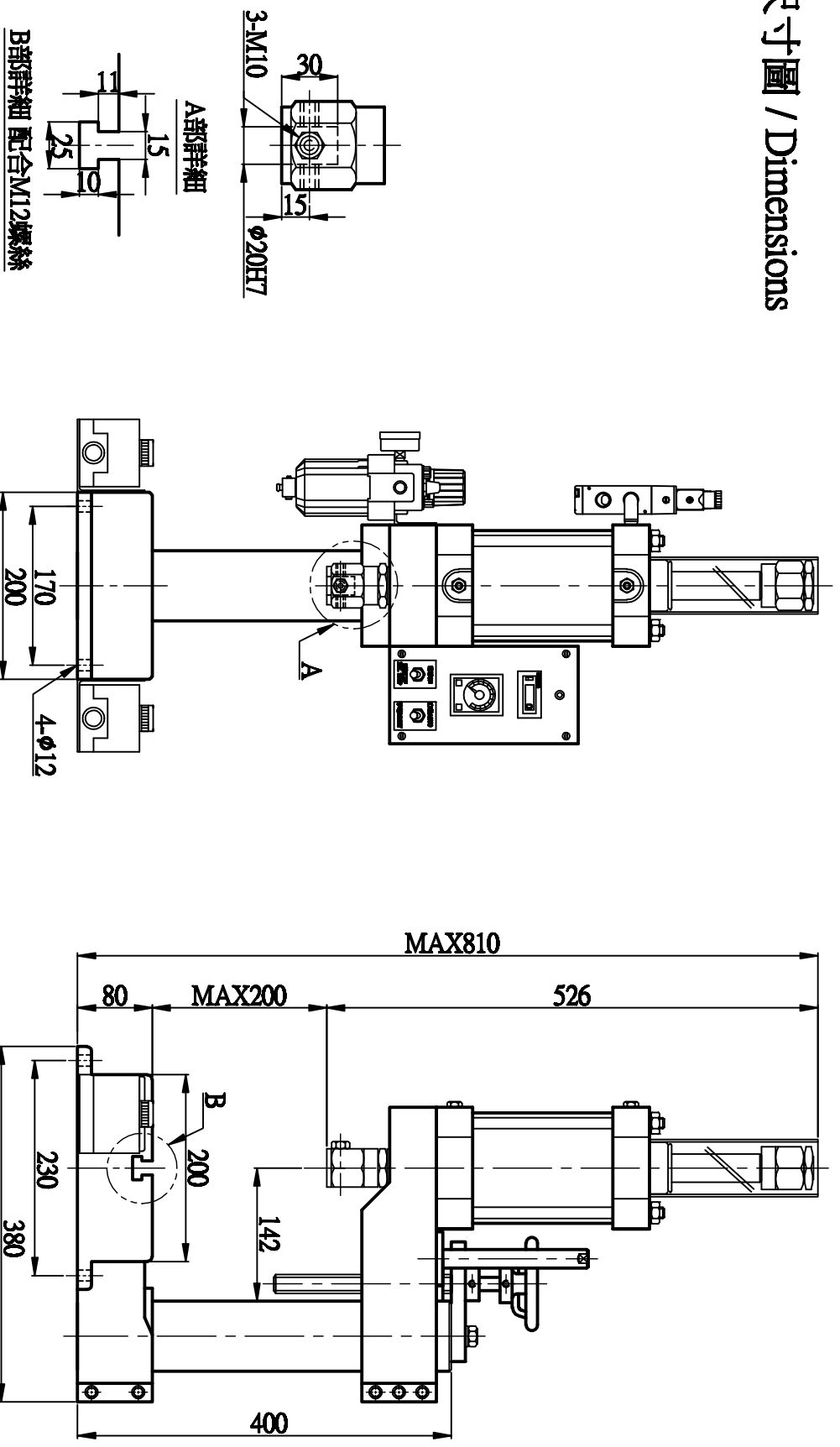


# 尺寸圖 / Dimensions



## 性能規格 / Specification

Item / Model	*OUTPUT	STROKE	CYLINDER DIA.	STROKE ADJ.	AIR CONSUMPTION	PIPING BORE	OPEN HEIGHT	WEIGHT	備註欄
	(kg)	(mm)	(mm)	(mm)	(L)	(PT)	(mm)	(kg)	
F101-300-氣壓壓床	300	100	φ100	30	10	3/8"	200	47	

\*出力値之測定係在 5kgf/cm<sup>2</sup> 壓力表值條件下測得 / The output valve is measured at 5kgf/cm<sup>2</sup> shown on the pressure gauge.