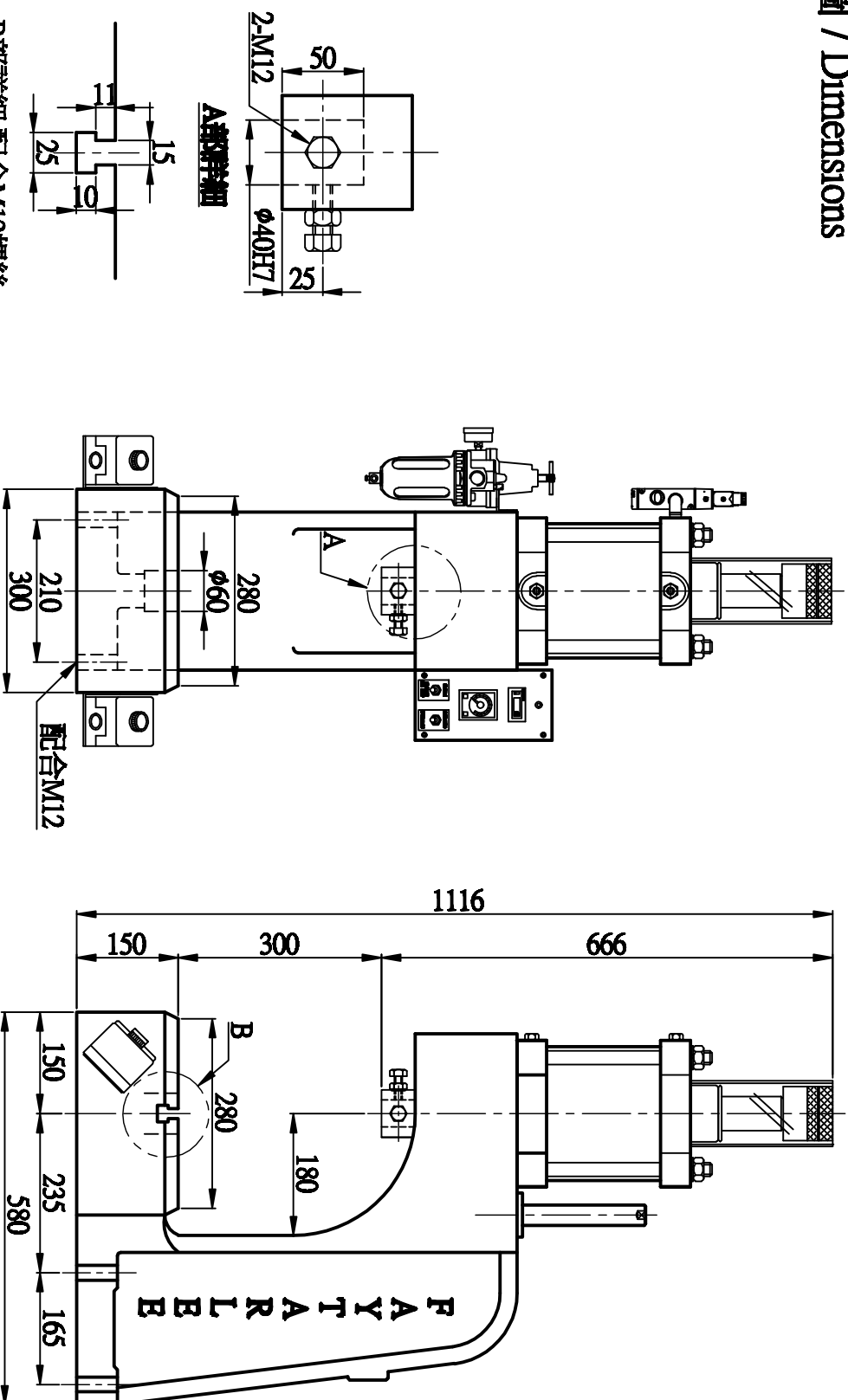


尺寸圖 / Dimensions



B部詳細 配合M12螺絲

性能規格 / Specification

Model	Item	*OUTPUT	STROKE	CYLINDER DIA.	STROKE ADJ.	AIR CONSUMPTION	PIPING BORE	OPEN HEIGHT	WEIGHT	備註欄
		(kg)	(mm)	(mm)	(mm)	(L)	(PT)	(mm)	(kg)	
F103-1000-氣壓壓床		1000	100	φ180	30	34	3/4"	300	200	

*出力値之測定係在 5kgf/cm² 壓力表值條件下測得 / The output valve is measured at 5kgf/cm² shown on the pressure gauge.