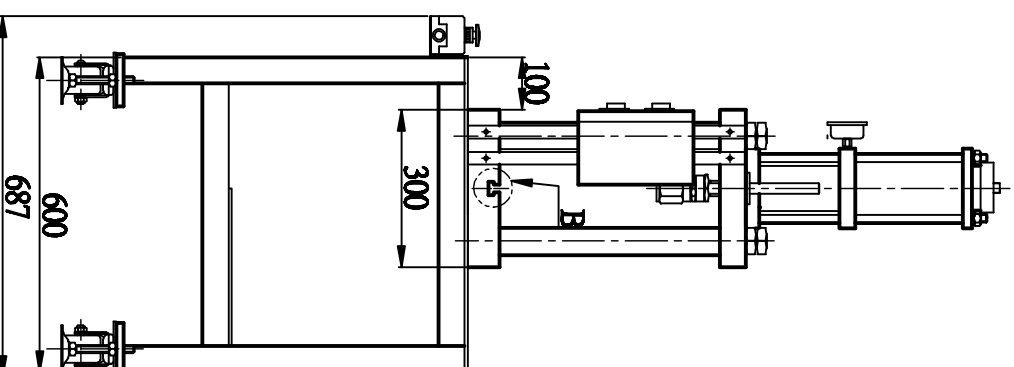
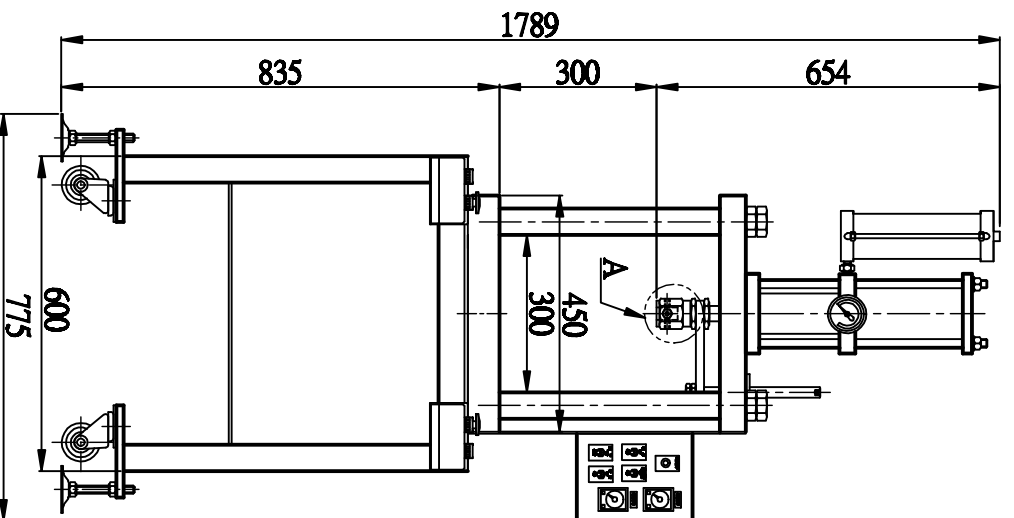
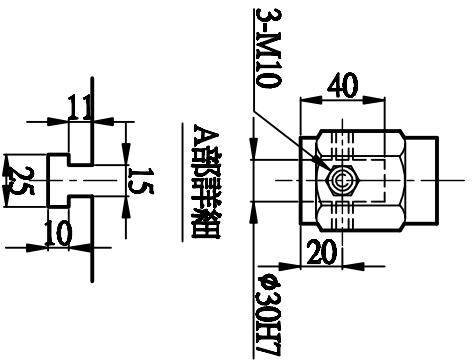


# 尺寸圖 / Dimensions



## 性能規格 / Specification

Model	Item		CYLINDER DIA. (mm)	RATE PRESSURE	AIR CONSUMPTION (L)	PIPING BORE (PT)	OPEN HEIGHT (mm)	WEIGHT (kg)	備註欄
	*OUTPUT (kg)	STROKE (mm)							
F105-10000-增壓壓床	10000	100	φ100	20:1	36	1/2"	300	220	

\*出力値之測定係在 6kgf/cm<sup>2</sup> 壓力表值條件下測得 / The output valve is measured at 6kgf/cm<sup>2</sup> shown on the pressure gauge.