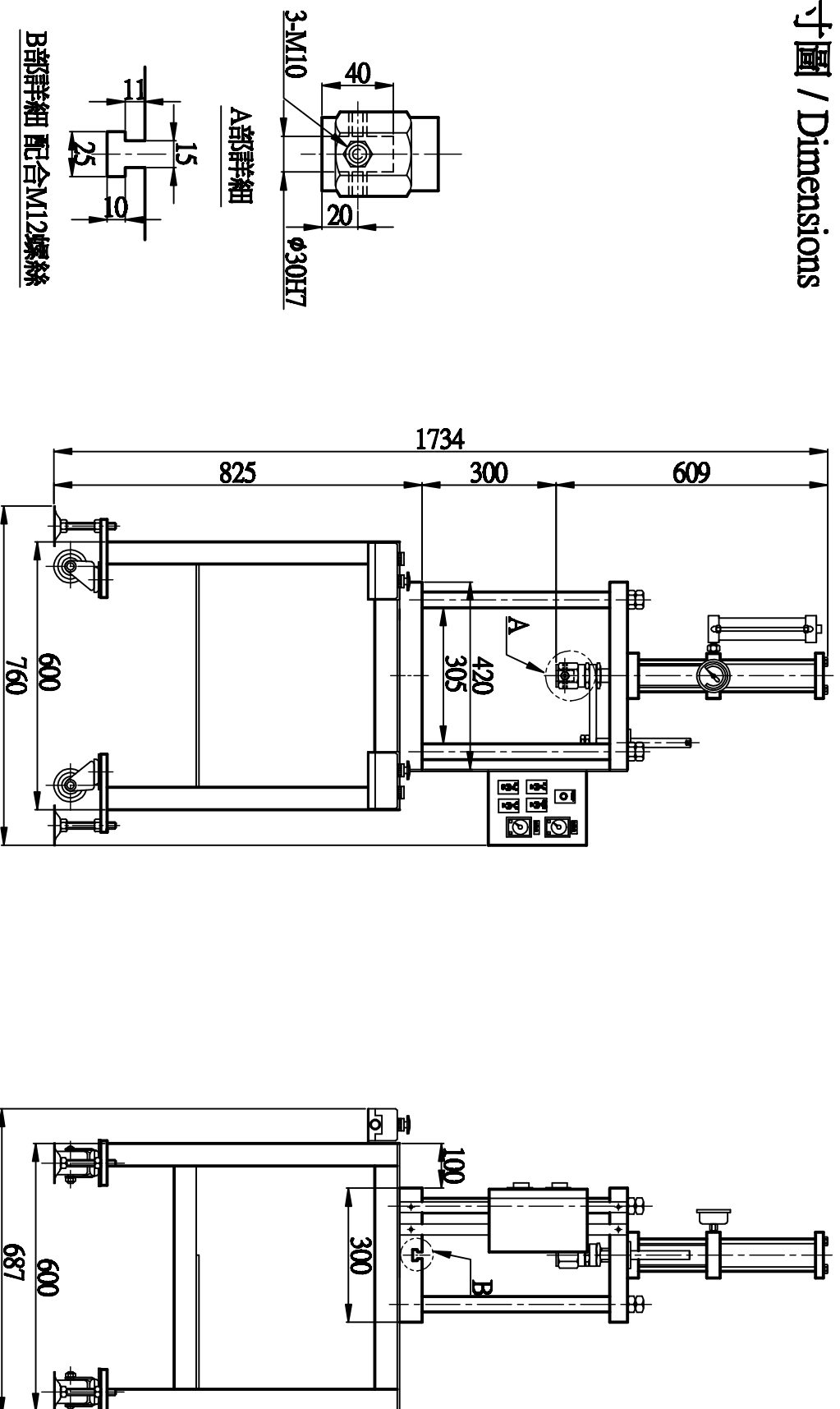


尺寸圖 / Dimensions



性能規格 / Specification

B部詳細 配合M12螺絲

Model	Item		CYLINDER DIA. (mm)	RATE PRESSURE	AIR CONSUMPTION (L)	PIPING BORE (PT)	OPEN HEIGHT (mm)	WEIGHT (kg)	備註欄
	*OUTPUT (kg)	STROKE (mm)							
F105-3000-增壓壓床	3000	100	$\phi 63$	16:1	22	3/8"	300	170	

*出力値之測定係在 5kgf/cm² 壓力表值條件下測得 / The output valve is measured at 5kgf/cm² shown on the pressure gauge.