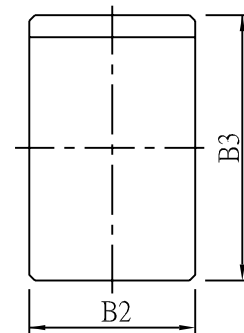
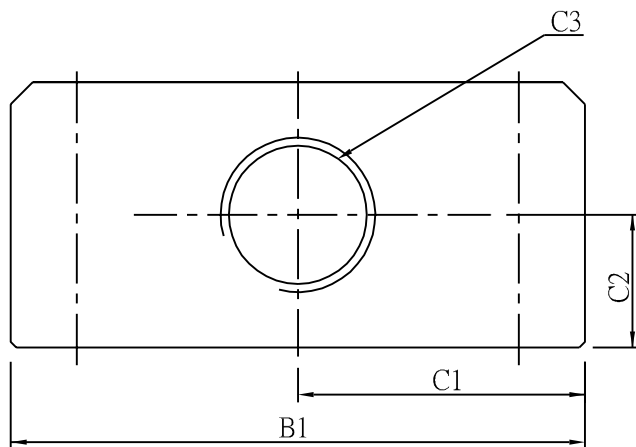
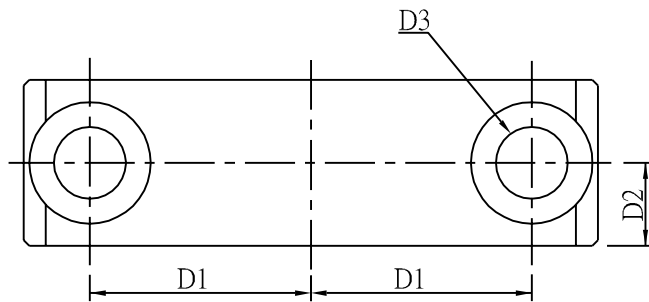


外形尺寸圖 GCA2 緩衝器固定塊



GCA2



記號	B1	B2	B3	C1	C2	C3	D1	D2	D3
缸徑 (mm)									
∅32, ∅40	52	15	24	26	12	M14X1.5P	20	7.5	鑽孔∅6.5, 柱孔∅9.5, 深6.5
∅50, ∅63	74	20	32	37	16	M20X1.5P	25	10	鑽孔∅8.5, 柱孔∅14, 深8.5
∅80, ∅100	110	25	40	55	20	M25X1.5P	40	12.5	鑽孔∅10.5, 柱孔∅17, 深11